

Rejoice, O Bethany

Lazarus Saturday

Psalm Tune Tone 6

Alice Hughes

E F C



unison: Re - joice, re - joice,
parts: When Mar - tha went to re -
unison: She at once cried out to
unison: Je - sus said to rise your



Beth - a - ny! On this day
ceive Him, - ing loud - ly with
Him, my most com -
weep - ing, cease griev - ing and

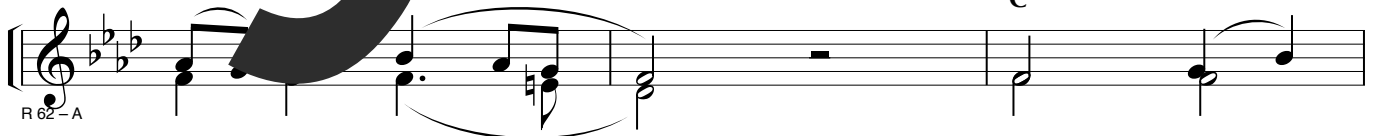


God came to thee; God came to thee;
bit - ter tears, bit - - - ter tears,
pas - sion - ate Lord, my Lord,
sad - lament; sad - lament;



in Him the dead are
she out the sor - - - row
at the great loss of my
your broth - er, my most be - lov - ed

C



R 62-A

made a - live, as is
of her heart to Him with great
broth - er Laz - a - rus my heart is
friend Laz - a - rus ver - y